

INTELLIGENT &
CYBER-PROTECTED
SAFETY-CRITICAL
SYSTEMS



ASPICE

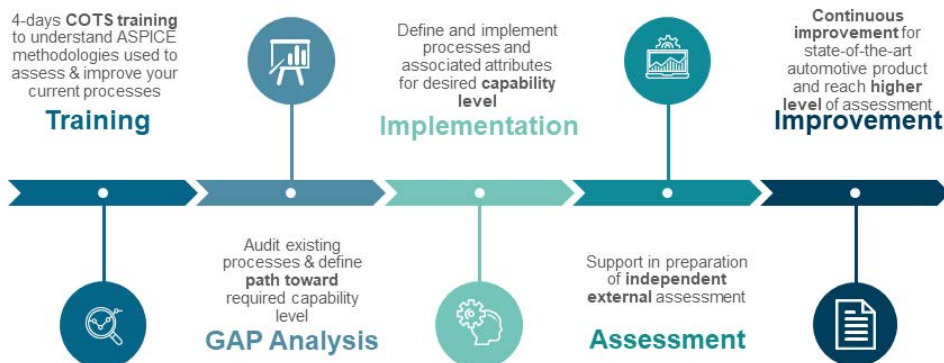
WE ACCELERATE ASPICE ADOPTION & PRODUCT COMMERCIALISATION

ASPICE Context & Challenges

Automotive Software Performance Improvement and Capability dEtermination (ASPICE) was created to provide a framework for defining, implementing, and evaluating the process required for system development focused on software parts. Major OEMs have adopted this standard internally to improve product quality and reliability but also to assess their suppliers.

For a supplier, achieving ASPICE can seem to be a difficult task to be managed. CS Canada has developed a proprietary methodology to accelerate ASPICE adoption.

Customer Journey



CS Canada Offering

- > **Training:** COTS or personalized sessions to jump start on the norm
- > **GAP Analysis:** Audit existing products and processes & identify path toward compliance
- > **Implementation:** Leverage what you have and use CS proprietary IP to fill processes or documentations gaps
- > **Assessment:** Prepare your teams for the external assessment with dry run or presentation support.

WHY CONSIDER CS ?

We have 20 years of experience with the highest and most demanding level of critical systems in the aerospace industry (DO-178C DAL A certification). For 7 years, we have been successfully leveraging our core safety critical expertise to the unique challenges of ADAS and autonomous driving. We are delivering the highest level of services to largest Automotive OEMs and system makers.



CS Canada Snapshot

Trusted Engineering Capability

- > Turn-key supplier of majors OEMs, T1 and T2 of the Automotive, Aerospace and Defence industries.
- > 150 Engineers in North America specialized in critical software development, testing and certification.

Functional Safety Office

- > ISO 26262 TÜV-SÜD certified functional safety experts with 10+ years experience in the industry.

Advanced R&D programs

- > Research Consortium

Involvement in international R&D programs (DEEL, IVES) to define V&V techniques to make artificial intelligence algorithms certifiable.

- > ATLAS

Based on the latest ML and NLP techniques, this tool analyses textual requirements and auto-generates test scripts, saving up to 30% of the verification costs.



CS Canada:
CS Inc:

Montreal, QC, Canada
East-Hartford, CT, USA

www.cscanada.ca
www.c-s-inc.us